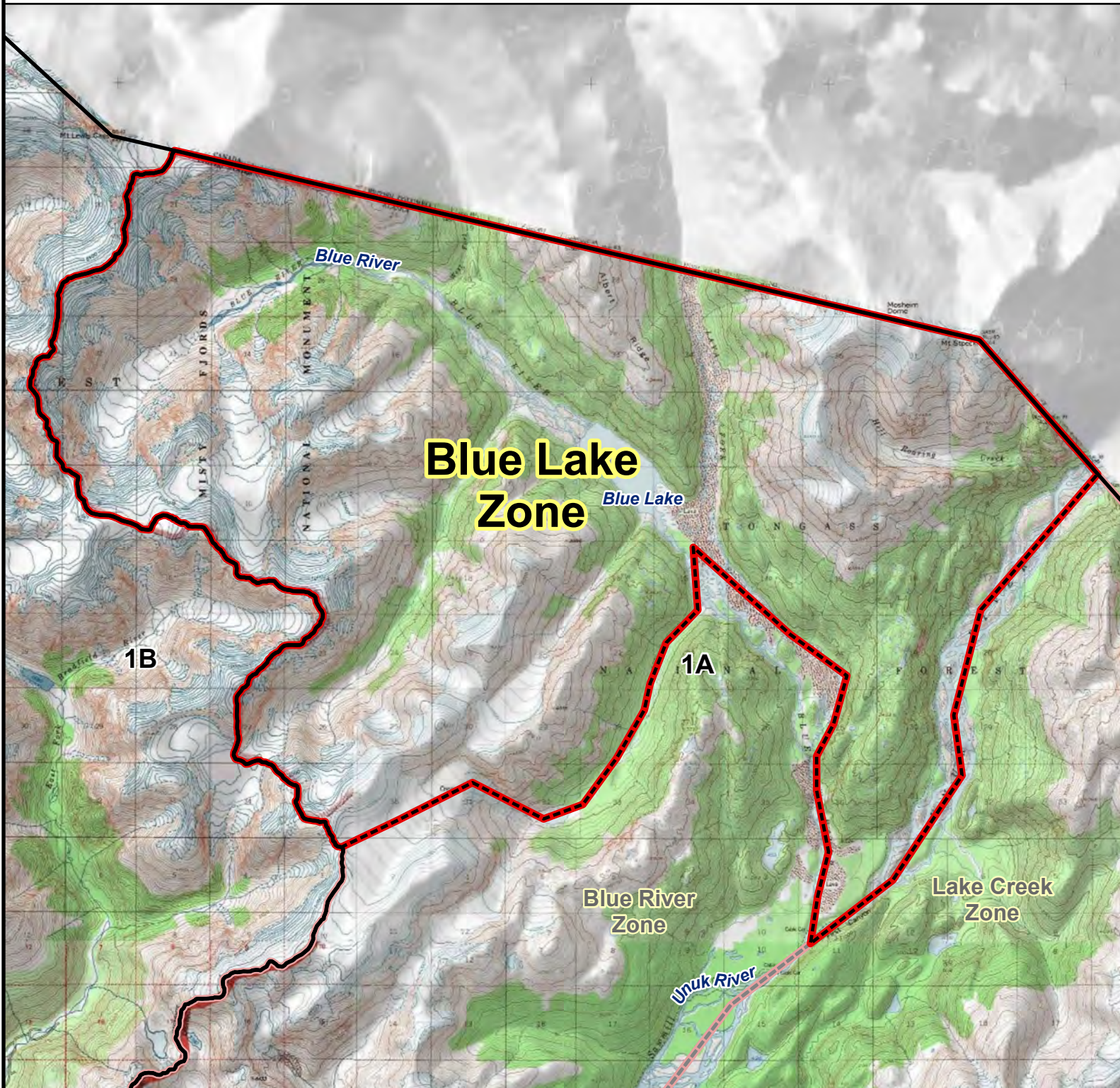


RG002 MOUNTAIN GOAT HUNT

Blue Lake Zone



Blue Lake Zone: Originating where the East Fork of the Bradfield River meets GPS coordinates N 56.239956, W -131.270283, north from the river up the drainage, then north from the end of the drainage through the valley to GPS coordinates N 56.359196, W -131.210632, from this point northeast along the drainage to Boundary Peak, southeast along the US-Canadian border to where the border meets the Unuk River, southwest along the Unuk River until it meets the outlet of the Blue River, north up the Blue River to the outlet of the river from Blue Lake, immediately south down the valley drainage that leads to the unnamed lake, west from the unnamed lake at GPS coordinates N 56.274016, W -130.930392 to the top of the ridge in the icefield, southwest to the East Fork of the Bradfield river, then southwest to the point of origin.

